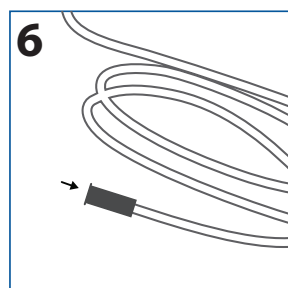
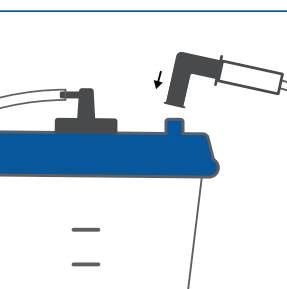
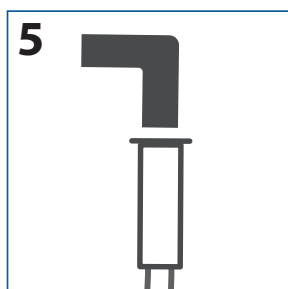
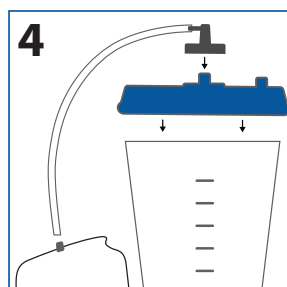
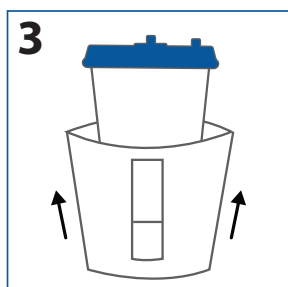
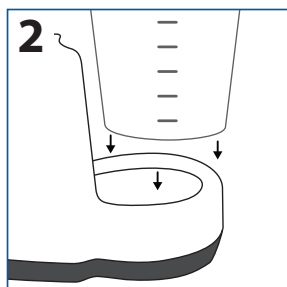
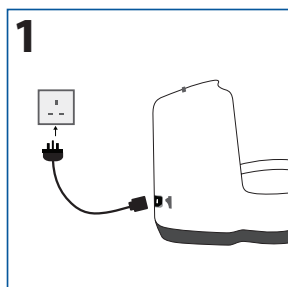


PureWick™

Urine Collection System

Set-up guide



1. Plug power cord into device outlet and into the A/C power outlet.
Note: make sure the power switch is turned off.
2. Place collection canister in the base and press down firmly on the lid of the device.
3. Optional: Slip privacy cover onto the canister prior to placing canister into base.
4. Attach pump tubing to the PureWick™ Urine Collection System connector port and the connector port on the collection canister lid.
5. Attach the elbow connector to the collector tubing and connect elbow connector to the connector port on collection canister lid.
6. Connect other end of collector tubing to a PureWick™ Female External Catheter.

Indications for use:

The PureWick™ Urine Collection System is to be used with PureWick™ Female External Catheters which are intended for non-invasive urine output management.

Contraindications for use:

Do not use the PureWick™ Urine Collection System with PureWick™ Female External Catheters on individuals with urinary retention.

Please consult package insert for more detailed safety information and instructions for use.



Freephone:
0800 0121 699

Email:
script-easy@bd.com

Nurse Advice Line Freephone:
0808 168 4048

Web:
www.scripteasy.co.uk

BD, Forest House, Tilgate Forest Business Park,
Brighton Road, Crawley, West Sussex RH11 9BP

www.bardcare.uk

BD, the BD logo, PureWick and Script-easy are trademarks of Becton, Dickinson and Company. Script-easy® is the prescription dispensing service operated by Bard Limited. Bard is now a wholly-owned subsidiary of BD (Becton, Dickinson and Company). © 2020 BD and its subsidiaries. All rights reserved. 0120/3899

